

# Technical Manual

# Beta ES250



### ACOUSTIC & ELECTRICAL SPECIFICATIONS:

- Nominal Impedance 8Ω
- Max Amp Power 150 watts\*
- Frequency Response 60Hz – 20kHz (±3dB)  
50Hz – 40kHz (-6dB)
- Sensitivity 87dB (2.83V @ 1 meter)
- Crossover Frequency 2.3kHz; 12dB/Octave

### SYSTEM COMPONENTS:

- Cabinet Beta ES250 (Not for Sale)
- Side Grille Black (for BLK) 352246-003  
Side Grille Gray (for WHT) 352246-004
- Low-Frequency Transducer Dual 5" (130mm) CMMD™ 352097-001  
DC Resistance 10.3 ohms ±10%
- High-Frequency Transducer Dual 1" (25mm) CMMD™ 351572-001  
DC Resistance 3.5 ohms ±10%
- Crossover Network (for BLK) 351699-001  
Crossover Network (for WHT) 351699-002

### AURAL SWEEP TEST SPECIFICATIONS:

- System Aural Sweep Test 6.0V Input 50Hz to 20kHz
- L.F. Aural Sweep Test 5.0V Input 50Hz to 3kHz
- H.F. Aural Sweep Test 2.83V Input 2kHz to 20kHz

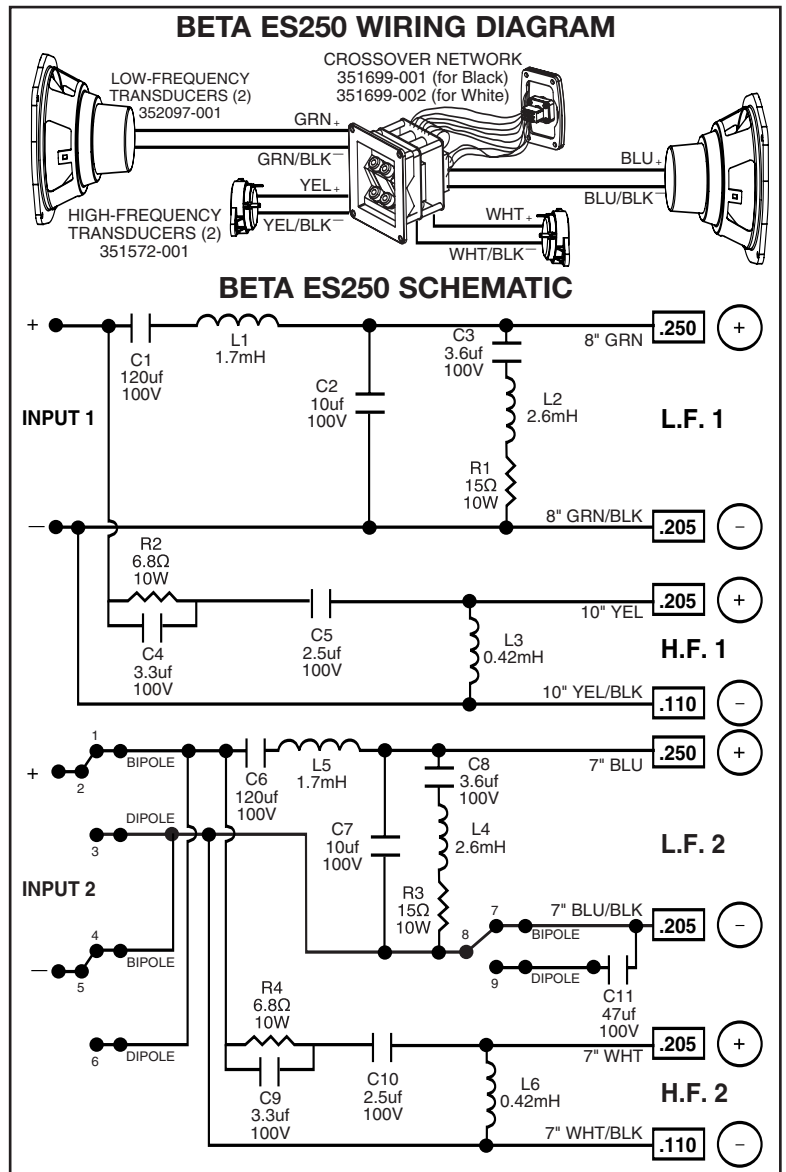
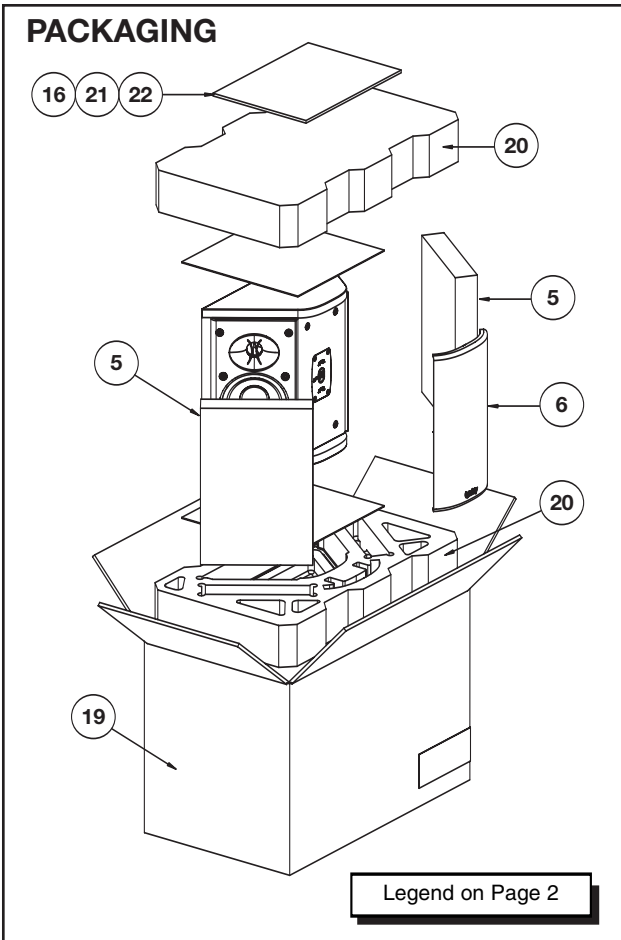
### PHYSICAL SPECIFICATIONS:

- Dimensions 13-3/4" x 11-13/16" x 6-7/8"  
(H x W x D)  
(350mm x 300mm x 175mm)
- Weight 12.5 lb (5.7kg) Each

### WARRANTY:

- Refer to Warranty Statement packed with each product.

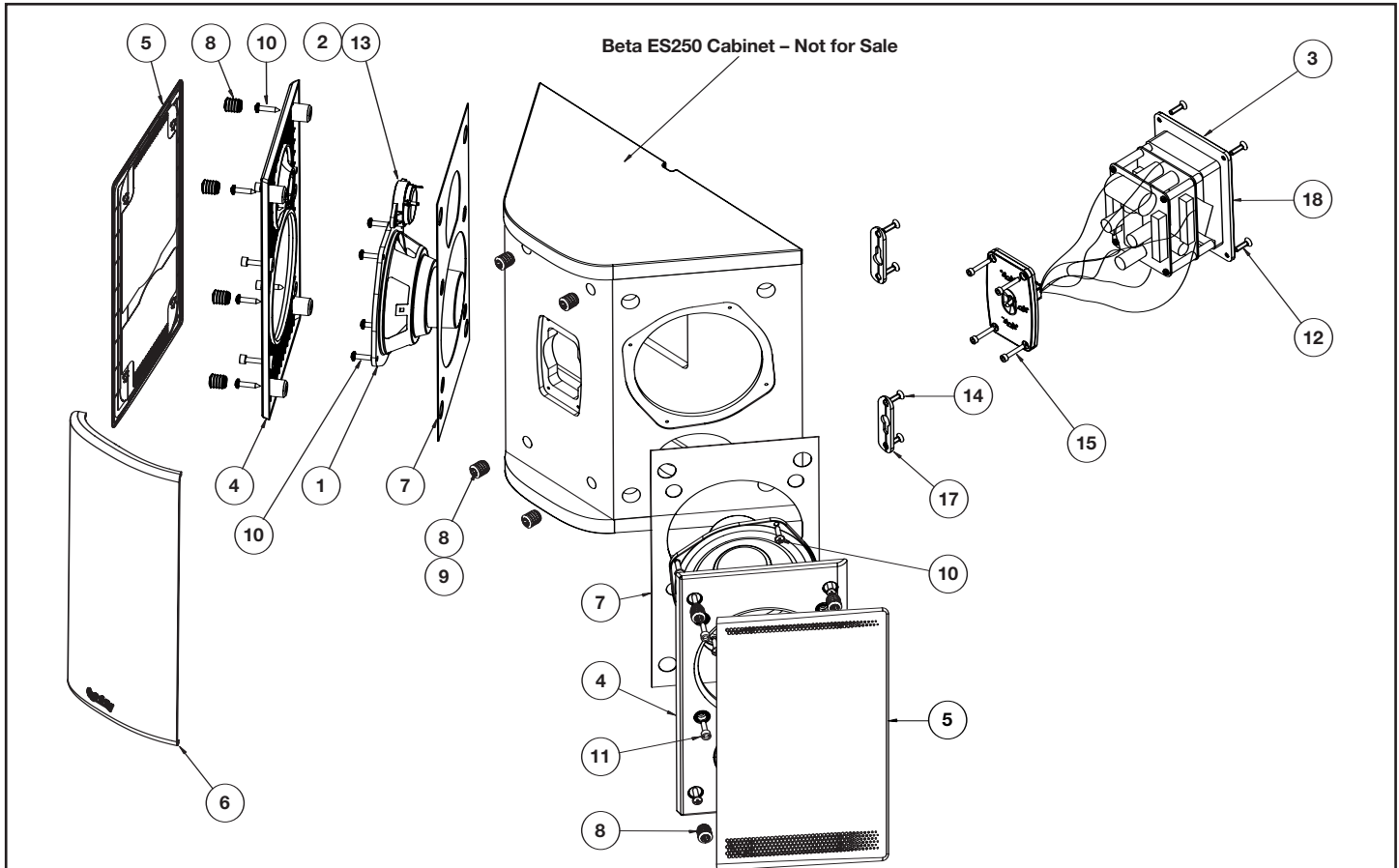
\* The maximum recommended amplifier power rating will ensure proper system headroom to allow for occasional peaks. We do not recommend sustained operation at these maximum power levels.



# Technical Manual

# Beta ES250

## EXPLODED VIEW



ITEM NO.	DESCRIPTION	QTY.	PART NO.	ITEM NO.	DESCRIPTION	QTY.	PART NO.
1.	Woofer	2	352097-001	11.	Screw (faceplate) PB, HXS, #8 x 1" BLK	8	903802-016
2.	Tweeter	2	351572-001	12.	Screw (network) PB, OPH, #6 x .75"	4	903201-012
3.	Crossover Network (for Black) same as above for White	1	351699-001 351699-002	13.	Screw (tweeter mounting) MS, PPH, H/L, 6-19 x .375"	4	905401-006
4.	Faceplate (for Black) same as above for White	2	352442-001 352442-002	14.	Screw (wall brackets) FLT, PH, PB, #8 x .75" BLK ZC	8	59460
5.	Assembly, Grille, Black (for Black) Assembly, Grille, Gray (for White)	2	352246-003 352246-004	15.	Screw (switch faceplate) PB, HXS, #6 x .75" BLK	4	908301-012
6.	Front Bezel, Black (for Black) (switch faceplate cover) same as above in Gray for White	1	352441-001 352441-002	16.	Felt Foot w/Adhesive Backing	4	335634-001
7.	Gasket, Faceplate	2	352254-001	17.	Rear Wall Bracket	4	7071490-001
8.	Cup, Grille and Bezel, Titanium (for Black) Cup, Grille, Titanium (for White)	12	333249-003 333249-003	18.	Shorting Straps (Right/Left Pair)	1 Set	CS06-6
9.	Cup, Bezel, White (for White)	4	333249-005	19.	Carton, Beta ES250 (Black) Carton, Beta ES250 (White)	1	352286-001 352286-002
10.	Screw (faceplate, woofer) PAN, PH, PB, BLK ZINC, #8 x .75"	16	883-41110-12	20.	Pad, Top & Bottom	2	352477-001
				21.	Owner's Manual	1	352611-001
				22.	5-Year Warranty Card, Infinity	1	335841-003

### TO SERVICE THE BETA ES250

Remove the grille(s).

1. Tweeter/Woofer: Remove the (4) rubber grille retainers on each wfr/twt faceplate; this can be accomplished by carefully pulling them out of their cavities with long-nosed pliers or similar tool.
2. Remove the (4) Phillips screws that are now exposed.
3. Remove the (4) Hex screws (5/32 or 4mm) bordering the woofer.
4. Carefully separate the front faceplate, with tweeter attached, from the cabinet.
5. Woofer: Remove the (4) Phillips screws that are now exposed.

**Beta ES250**